

Suran

811399  
ITA 097990030448



GGI-SPERMEX  
Genetics made in Germany

CVF BLF BYF

Born: 30.12.2010

aAa: 132546

Kappa-Casein: AB

Beta-Casein: A2/A2

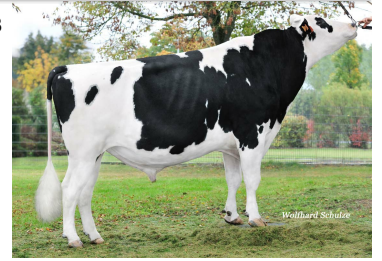
Proofs 04/2018

♂ Charlesdale Superstition (♂ End-Road PVF Boliver-ET)

♀ Albus Mr Burns Obama (2) VG 89 (♂ Dudoc Mr Burns RDC)  
2 lac 15784 3.33 526 3.21 506

♀ Albus Goldwyn Mata (2) VG 88 (♂ Braedale Goldwyn)  
3 lac 13218 3.52 465 3.56 471

♀ Albus Man Ileandra (1) VG 85 (♂ O-Man)



Suran VG 88

RZG 133 (99%)	RZM 136 (99%)	RZE 107 (99%)	RZS 115 (99%)	RZN 106 (99%)	RZR 93 (98%)	RZKm 102 (99%)	RZKd 92 (99%)	RZD 97 (97%)	RZFIT 112 (99%)	RZRobot 106 (99%)
---------------------	---------------------	---------------------	---------------------	---------------------	--------------------	----------------------	---------------------	--------------------	-----------------------	-------------------------

Milk Production Index

RZM 136

Daughters 8535	farms 2454	Rel. 99 %	Milk kg +1512 kg	Fat % -0.15 %	Fat kg +44 kg	Protein % +0.02 %	Protein kg +53 kg
-------------------	---------------	--------------	---------------------	------------------	------------------	----------------------	----------------------

Conformation

RZE 107

Daughters 2474	farms 790	Rel. 99 %	Dairy Type 106	Body 108	Feet & legs 100	Udder 106
-------------------	--------------	--------------	-------------------	-------------	--------------------	--------------

		76	88	100	112	124	
Stature	small						112 tall
Angularity	non-angular						104 angular
Body depth	shallow						106 deep
Strength	narrow						104 strong
Rump angle	ascending						116 sloped
Rump width	narrow						96 wide
Rear leg set side view	straight						112 sickled
Foot angle	low angle						103 steep
Hock quality	coarse						105 clean
Rear leg set rear view	toes out						93 parallel
Locomotion	bad						100 good
Rear udder height	low						113 high
Suspensory ligament	weak						96 strong
Teat placement (front)	wide						114 close
Teat placement (rear)	wide						100 close
Fore udder attachment	loose						97 tight
Udder depth	deep						103 shallow
Teat length	short						100 long



Marina VG 87 2. LA



Shisha GP 84